



# 2024 VOLUNTEER HANDBOOK



# 2024 POLICIES + PROCEDURES

## Upon Arrival



All volunteers will be asked to park in the Gravel Lot across the street from the Blessings Clubhouse. Upon arrival, volunteers should check-in at the Volunteer Headquarters (Razorback Indoor Practice Facility). Carts will be available outside the center to shuttle volunteers to their respective committee locations when walking is not feasible.



Once checked-in, breakfast or lunch will be available for volunteers. Drinks and light snacks will be available for grab and go at the Volunteer Headquarters, as well.

## Volunteer Onsite Transportation



Shuttle golf carts will be staged outside Volunteer Headquarters as well as at Hole #9 Green/Hole #10 tee to provide rides to volunteers. In addition, the Volunteer Services team will have Transportation Cards with the phone number to request a ride if you are at a specific hole and need a ride back to the Clubhouse.

## Connect With Us

Make sure to follow the #BlessingsCollegiate on social media to stay up to date with tournament news + information. Tournament details will also be shared on the website, [www.BlessingsCollegiate.com](http://www.BlessingsCollegiate.com).



@BlessingsCollegiate



@BlessingsCollegiate



@BlessingsCI



# 2024 EVACUATION PLAN

Hole 1 2 3 4 5 6 7 8 9

TEE	W	W	A	A	A	B	B	C	C
FAIRWAY	W	A	-	A	B	-	B	-	D
GREEN	W	A	A	A	B	B	C	C	D

Hole 10 11 12 13 14 15 16 17 18

TEE	D	D	D	D	E	A	A	W	W
FAIRWAY	D	D	D	-	E	A	A	-	W
GREEN	D	D	D	D	E	A	A	W	W

If there is an evacuation in place, please seek shelter in **Volunteer Headquarters**.

If the horn blows, please walk to your designated location. Carts will make continuous loops until all volunteers and spectators have been picked up.

**W** – Walk to the Volunteer Headquarters

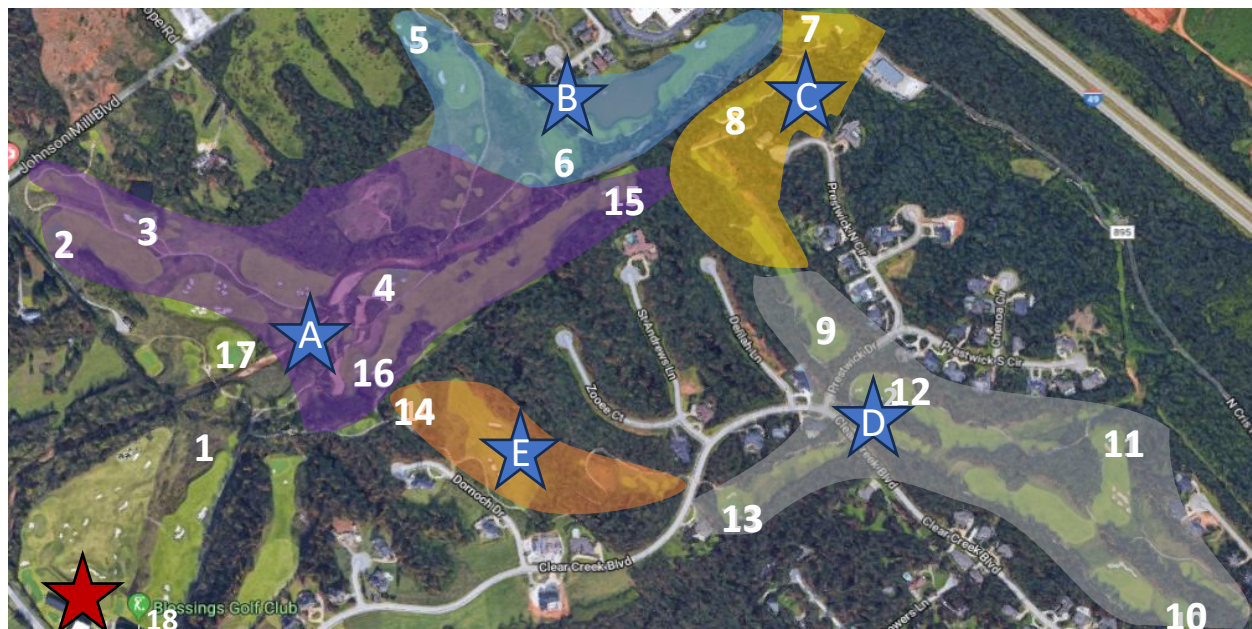
**A** – Carts located between 4 green and 17 tee/restrooms

**B** – Carts located players left of hole 6 (cart path cutout by bridge)

**C** – Carts located players right of 7 near maintenance

**D** – Carts located between 10 tee/12 green near permanent restrooms

**E** – Carts located players right of 14 fairway on Dornoch Dr.



## VOLUNTEER HEADQUARTERS

At the appropriate time, those volunteers who require transportation back onto the course should assemble in front of Volunteer Headquarters. Carts will be stationed there with hole numbers and/or areas specified.





# IMPORTANT VOLUNTEER NOTES



## Onsite Locations

**Blessings Golf Club**  
5826 Clear Creek Blvd,  
Fayetteville, AR 72704

**VOLUNTEER  
HEADQUARTERS**

**Razorback Practice Center**

**VOLUNTEER PARKING**

**Blessings Gravel Lot –  
Across Street from  
Clubhouse**

**ADMISSIONS**

**Clubhouse Parking Lot**

## Important Contacts

**Cassie Rau**

Volunteer Co-Lead

(989) 293-5066

[crau@outlyr.com](mailto:crau@outlyr.com)

**Grace Mowry**

Volunteer Co-Lead

(989) 439-5057

[gmowry@outlyr.com](mailto:gmowry@outlyr.com)

**Rusty Gay**

Volunteer Support

(706) 871-0246

[rgay@outlyr.com](mailto:rgay@outlyr.com)

## Radio Channels

Channel 1	Rules
Channel 2	Operations
Channel 4	Scoring
Channel 6	Security + First Aid + EMS
Channel 7	Supply Distribution
Channel 8	Marshals
Channel 10	Carts
Channel 11	Volunteers
Channel 12	Open A

## Volunteer Center Hours of Operation

Sunday	7:00am – 6:00pm
Monday	7:00am – 6:00pm
Tuesday	7:00am – 6:00pm
Wednesday	7:00am – 6:00pm