



2020 VOLUNTEER HANDBOOK



2020 VOLUNTEER UPDATES

Before You Arrive



The health + safety of all players, coaches and volunteers is our top priority. New policies and procedures will be implemented onsite as a result of the COVID-19 pandemic. Follow the tips below to help create a fun and safe experience onsite at the #BlessingsCollegiate.



Please review the CDC symptoms questionnaire.

<https://www.cdc.gov/coronavirus/2019-ncov/>

If you are experiencing any COVID-19 symptoms, please do not attend the tournament and seek medical advice.

Upon Arrival



All volunteers will be asked to park in the Blessings Gravel Lot across the street from the Clubhouse, and then proceed to the temperature screening area in the Clubhouse Breezeway. After a passed screening, volunteers should check-in at the Volunteer Center (Razorback Indoor Practice Facility). Carts will be available outside the center to shuttle volunteers to their respective committee locations when walking is not feasible.



All volunteers will receive a temperature screening upon arrival at the tournament. Once the screening is passed, you will be allowed to enter the Volunteer Center. Each volunteer will receive a daily PPE Bag which will include disposable masks, gloves, and sanitizing products.



Once checked-in, breakfast/lunch will be available in a pre-packaged form for volunteers. Drinks and light snacks will be available for grab and go at the Volunteer Center, as well.

Volunteer Onsite Transportation



Shuttle golf carts will be staged outside the Volunteer Center as well as at Hole #9 Green/Hole #10 tee at all times to provide rides to volunteers. Please note, masks are required at all times while on a shuttle cart. In addition, the Volunteer Services team will have Transportation Cards with the phone number to request a ride if you are at a specific hole and need a ride.



2020 VOLUNTEER HANDBOOK

Important Contacts

RACHEL REECE

Volunteer Support
 (901) 326-4947
 Rachel.Reece@octagon.com

KAYLEY EDWARDS

Onsite Support
 (479) 651-3242
 Kayley.Edwards@octagon.com

JOHN POST

Onsite Support
 (203) 241-5269
 John.Post@octagon.com

Radio Channels

Channel 1	Rules
Channel 2	Operations
Channel 4	Scoring
Channel 6	Security + First Aid + EMS
Channel 7	Supply Distribution
Channel 8	Marshals
Channel 10	Carts
Channel 11	Volunteers
Channel 12	Open A

Volunteer Center Hours of Operation

Sunday	7:00am – 6:00pm
Monday	7:00am – 6:00pm
Tuesday	7:00am – 6:00pm
Wednesday	7:00am – 6:00pm

Evacuation Plan

Hole 1 2 3 4 5 6 7 8 9

TEE	W	W	A	A	A	B	B	C	C
FAIRWAY	W	A	-	A	B	-	B	-	D
GREEN	W	A	A	A	B	B	C	C	D

Hole 10 11 12 13 14 15 16 17 18

TEE	D	D	D	D	E	A	A	W	W
FAIRWAY	D	D	D	-	E	A	A	-	W
GREEN	D	D	D	D	E	A	A	W	W

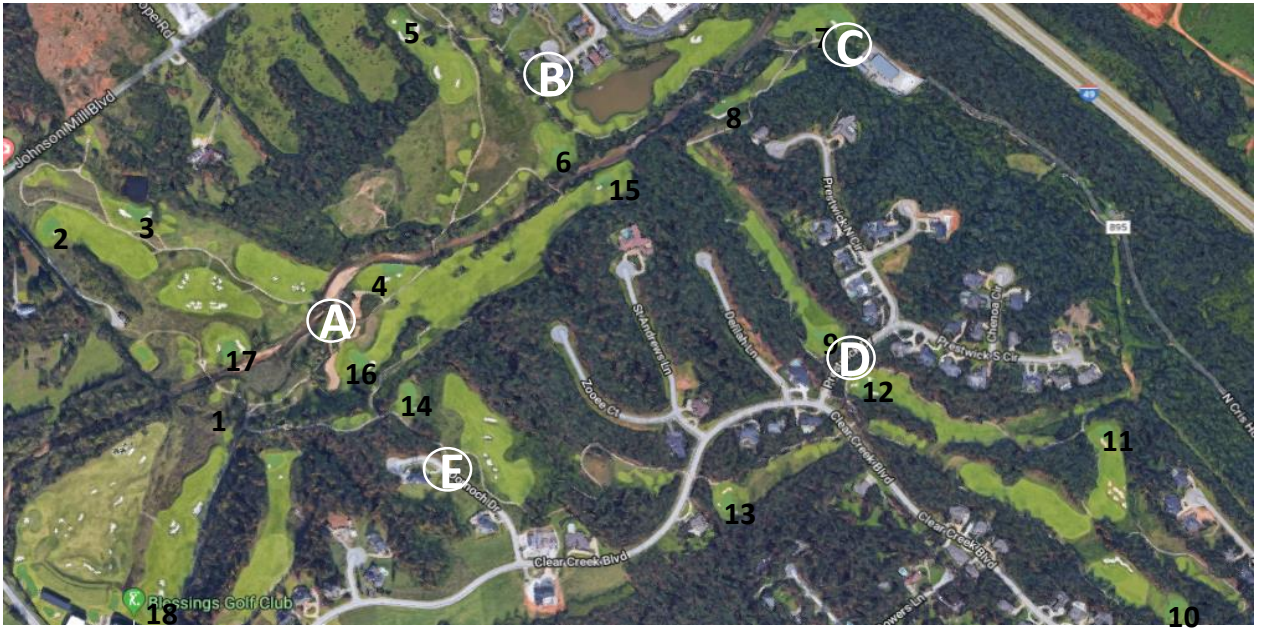
- W** – Walk to the Blessings Clubhouse
- A** – Carts located between 4 green and 16 fairway
- B** – Carts located players left of hole 6
- C** – Carts located players right of 7 near maintenance
- D** – Carts located behind between 10 tee/12 green
- E** – Carts located players right of 14 fairway on Dornoch Dr.

At the appropriate time those volunteers who require transportation back on the course should assemble in front of the main entrance to the clubhouse. Carts will be stationed there with hole numbers and/or areas specified.



IMPORTANT VOLUNTEER NOTES

Evacuation Map



Onsite Locations

VOLUNTEER HEADQUARTERS
Razorback Practice Center

VOLUNTEER PARKING
Blessings Gravel Lot –
Across Street from
Clubhouse

TEMPERATURE SCREENING
Clubhouse Breezeway